

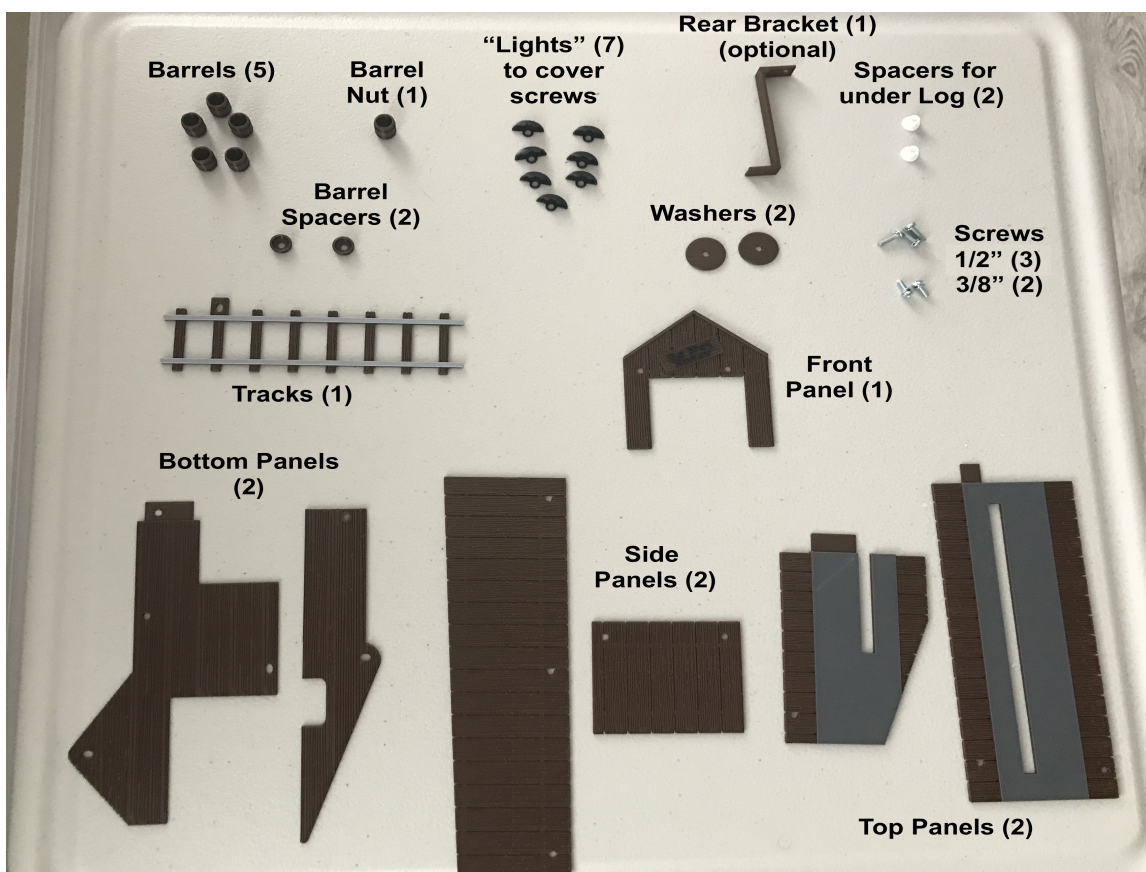
## General Instructions For Rocky and Bullwinkle Pinball Sawmill

(Not all of these items may have come with the set your purchased)

Please note, not all games will have the same exact procedures due to how games are assembled and how people have made changes to them over the years. For example, mine was missing the whole light assembly in front of the saw mill. As with most types of plastics, do not force or bend the plastic pieces/tabs or they may break. If this happens, plastic cement (such as Testors in the red tube) can easily repair the part.

When assembling, it is best to remove the existing sawmill by removing the 3 screws (1 in front bottom right, 1 in the back bottom right and one on the top left front corner). You will have to lift the playfield to disconnect the electrical plug to the sawmill and then feed it thru the hole. If your machine did have the light in front of the sawmill, I would also disconnect it from below and not reuse. Then remove the existing bottom plastic that was below the sawmill. Save all the screws from disassembly since most all will be reused.

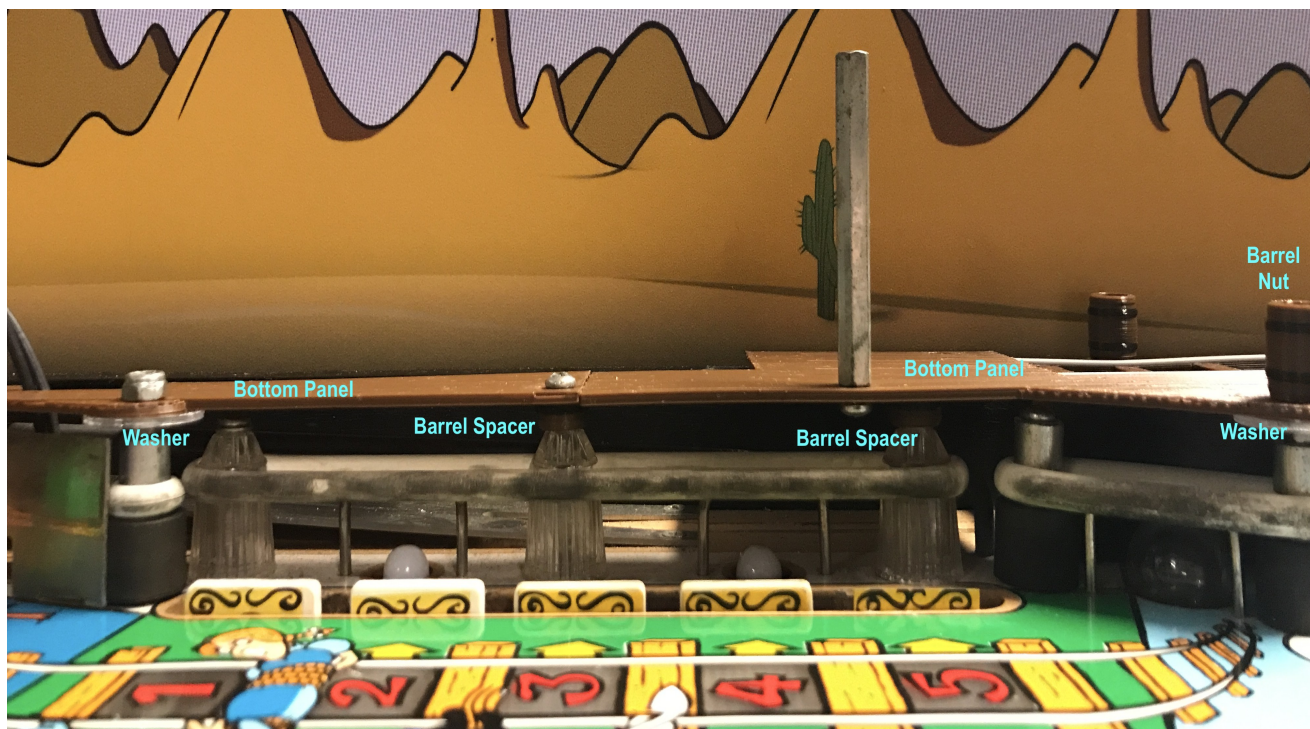
### Included Parts (33 Total)



#### Part Notes:

- The optional rear bracket is used to lower the sawmill to make it have a more level appearance
- You may only need one of the two 3/8" screws.

## Bottom Part Locations



Notes: (Pay no attention to the dirty rubbers and broken target)

- Barrel Nut replaces lock nut (save lock nut for use later)
- Washers go below the bottom panels
- Screw for left barrel spacer is secured from above the bottom panels
- Screw for right barrel spacer is NOT screwed thru bottom panel (just thru spacer)
- Reattach metal standoff in original position on new panel

## Side and Top Part Locations



Notes:

- \*Replace screw with 1/2" screw and lock nut saved from earlier. This is where you have the option of using the lower rear bracket to level out the sawmill (see pic on following page).
- \*\*Replace screw with 3/8" screw

## Optional Rear Bracket

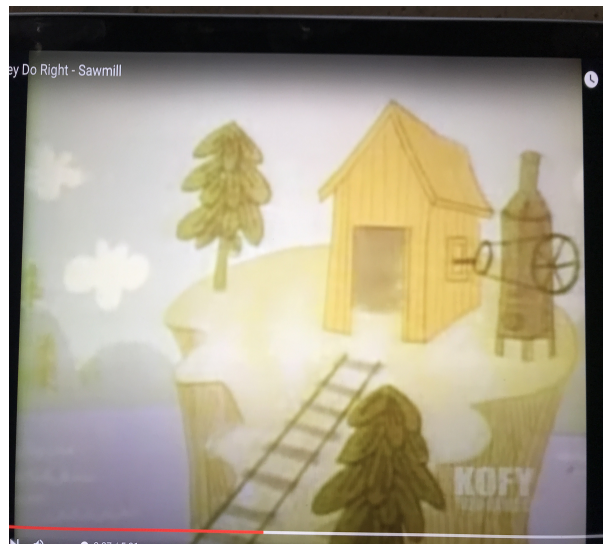


## Log Spacers



Before reattaching the log, replace the original spacers with the new log spacers.

## Front Part Locations



The picture my sawmill was based off of (from Dudley Do Right)

Thank you for your purchase and I hope you enjoy your game and my mods. If you have any questions, problems or suggestions for this or other mods, please email me directly at [ThePinballDaddy@gmail.com](mailto:ThePinballDaddy@gmail.com)